


**STREET & URBAN LIGHTING**



# About us



Omnitech Lighting Private Limited (OLT) is an ISO 9001:2015 quality certified LED luminaires manufacturing company specializing in outdoor Flood and Architectural lights that are 100% designed and made in India conforming to the latest Indian and international lighting standards. OLT LED lights have high reliability built into the design through years of R&D and experience.

Omnitech Lighting also undertakes custom design and Manufacturing of project based LED lighting fixtures to suit special applications.

Omnitech Lighting has a modern manufacturing unit located at Greater Noida in Delhi NCR, India. We ensure. All OLT lighting fixtures are tested in-house as well as at NABL accredited labs like UL, Intertek and undergo rigorous testing for extreme temperature and humidity conditions to ensure reliability in all operating conditions.

Photometric design IES files for all OLT luminaires are available to enable customers and architects for design and selection of appropriate type and number of luminaires in any design software like DIALUX, RELUX or AGi32.





# STREET LIGHTING

Uniform, efficient and  
safe lighting for any design  
requirement

## Street Lighting

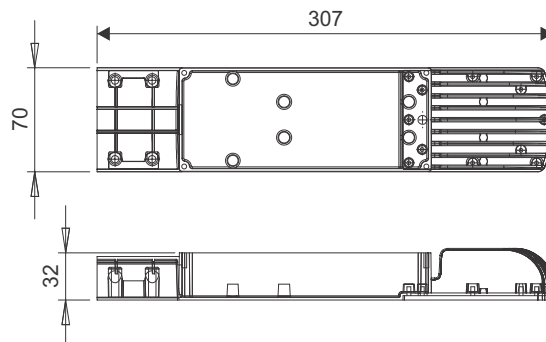
				
AEROSTREET CUB	NEXA MICRO	NEXA MIINI	NEXA MIDI	RODEO MIINI
				
RODEO MIDI	RODEO MAXI	RODEO MEGA	THETA -I	AEROSTREET SLEEK

## Aerostreet-CUB

IP66 IK08



Energy Label A++



## LED STREET LIGHT

## SPECIFICATION

**Housing** : High pressure die cast aluminium

**LEDs** : High power LEDs with high efficacy ( $>150\text{lm/W}$ ), 3000K/ 4000K/5700K having luminous flux maintenance of 70% (L70 B20) at 50,000 Hrs.

**Pole connection** : Suited for poles with a diameter 30-40mm.

**Lens** : High efficiency PC integrated IP 66 lens, Type - 2 wide angle  $130^\circ \times 70^\circ$ .

**Coating**: Polyester resin powder coating, resistant to corrosion and saline environments.

**Driver** : Integral driver with safety diode to protect the LED module against voltage peaks up to 4KV. P.F.  $> 0.95$ .

**Ambient Temperature Zone** :  $-30^\circ\text{C}$  to  $+50^\circ\text{C}$

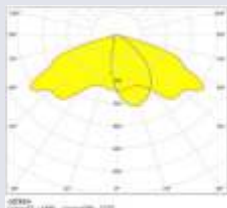
**Input Voltage Range** : 100V – 280V AC, 50-60 Hz



Application image for reference purpose only

## Technical Specifications

SERIES	ITEM CODE	SYSTEM WATTAGE	INPUT CURRENT	DELIVERED LUMENS	THD	PF	SURGE PROTECTION	CRI	IP	DIMENSION (LxWxH)mm
AEROSTREET-CUB	OLSL-0015-757- T2-00	15	0.065	1650	$<10\%$	0.95	4 KV	70	66	307x70x32
AEROSTREET-CUB	OLSL-0020-757- T2-00	20	0.109	2250	$<10\%$	0.95	4 KV	70	66	307x70x32
AEROSTREET-CUB	OLSL-0030-757- T2-00	30	0.131	3300	$<10\%$	0.95	4 KV	70	66	307x70x32

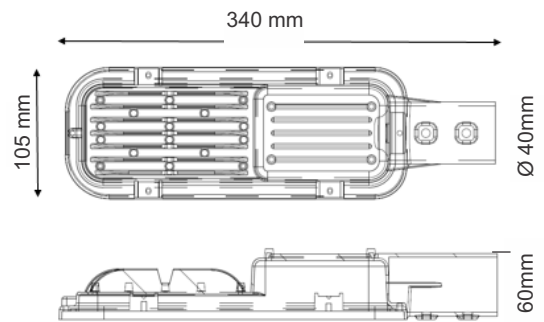


# NEXA-Micro

IP66 IK08



Energy Label A++



## LED STREET LIGHT

### SPECIFICATION

**Housing** : High Pressure die-cast aluminium with Cooling fins

**LEDs** : Power LEDs with high efficacy (>150lm/W), having Luminous Flux maintenance of 70% (L70 B20) at 50,000 Hrs.

**Pole connection**: Suited for pole brackets with outer diameter 30-40mm

**Lens** : High efficiency PMMA with Strada optics – wide Angle 130° x 70° - TYPE-1,TYPE-2,TYPE-3.

**Diffuser** : Clear toughened glass 4mm thick, resistant to thermal shock

**Coating** : Polyester resin powder coating, resistant to corrosion and saline environments

**Driver** : Integral Driver with safety diode to protect the LED module against voltage peaks up to 4KV. P.F. > 0.95.

**Ambient Temperature Zone** : -30 °C to +50°C

**Input Voltage Range** : 100V – 280V AC, 50-60 Hz



Application image for reference purpose only

### Technical Specifications

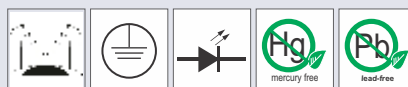
SERIES	ITEM CODE	SYSTEM WATTAGE	INPUT CURRENT	DELIVERED LUMENS	THD	PF	SURGE PROTECTION	CRI	IP	DIMENSION (LxWxH)mm
NEXA MICRO	OLSL-0010-757-T1-00	10	0.043	1000	<10%	0.95	4 KV	70	66	340x105x60
NEXA MICRO	OLSL-0015-757-T1-00	15	0.065	1500	<10%	0.95	4 KV	70	66	340x105x60
NEXA MICRO	OLSL-0025-757-T2-00	25	0.109	2500	<10%	0.95	4 KV	70	66	340x105x60
NEXA MICRO	OLSL-0030-757-T2-00	30	0.131	3000	<10%	0.95	4 KV	70	66	340x105x60



Type-I

Type-II

Type-III



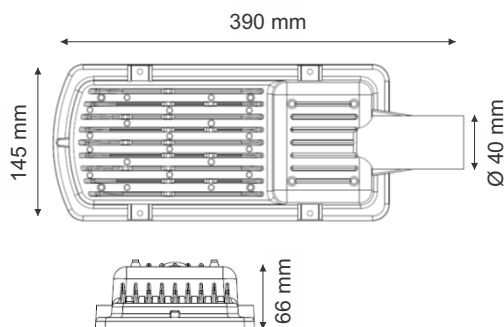


## NEXA-Mini

IP66 IK08



Energy Label A++



## LED STREET LIGHT

## SPECIFICATION

**Housing :** High pressure die-cast aluminium with cooling fins

**LEDs :** Power LEDs with high efficacy (>150lm/W), having Luminous flux maintenance of 70% (L70 B20) at 50,000 Hrs.

**Pole connection:** Suited for pole brackets with outer diameter 30-40mm.

**Lens :** High Efficiency PMMA with Strada optics – wide Angle 130° x 70°, TYPE-1,TYPE-2,TYPE-3

**Diffuser :** Clear toughened glass 4mm thick, resistant to thermal shock.

**Coating:** Polyester resin powder coating, resistant to corrosion and saline environments.

**Driver :** Integral driver with safety diode to protect the LED module against voltage peaks up to 4KV. P.F. > 0.95.

**Ambient Temperature Zone :** -30 °C to +50°C

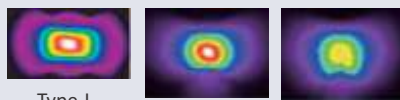
**Input Voltage Range :** 100V – 280V AC, 50-60 Hz



Application image for reference purpose only

## Technical Specifications

SERIES	ITEM CODE	SYSTEM WATTAGE	INPUT CURRENT	DELIVERED LUMENS	THD	PF	SURGE PROTECTION	CRI	IP	DIMENSION (LxWxH)mm
NEXA MINI	OLSL-0040-757-T1-00	40	0.175	4000	<10%	0.95	4 KV	70	66	390x145x66
NEXA MINI	OLSL-0045-757-T2-00	45	0.197	4500	<10%	0.95	4 KV	70	66	390x145x66
NEXA MINI	OLSL-0050-757-T3-00	50	0.219	5000	<10%	0.95	4 KV	70	66	390x145x66



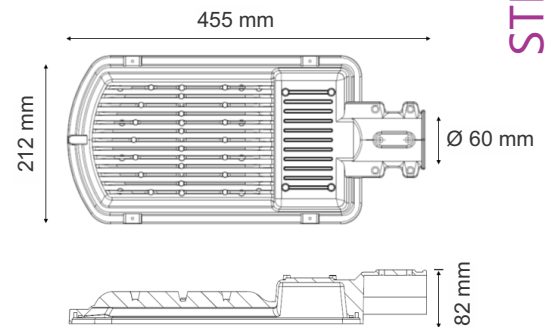


# NEXA-Midi

IP66 IK08



Energy Label A++



STREET LIGHTING

## LED STREET LIGHT

### SPECIFICATION

**Housing :** High pressure die-cast aluminium with cooling fins.

**LEDs :** Power LEDs with high efficacy (>150lm/W), having luminous flux maintenance of 70% (L70 B20) at 50,000 Hrs.

**Pole connection:** Suited for pole brackets with outer diameter 60mm.

**Lens :** High efficiency PMMA with Strada optics – wide angle 130° x 70°, TYPE-1,TYPE-2,TYPE-3

**Diffuser :** Clear toughened glass 4mm thick, resistant to thermal shock

**Coating :** Polyester resin powder coating, resistant to corrosion and saline environments

**Driver :** Integral driver with safety diode to protect the LED module against voltage peaks up to 4KV. P.F. > 0.95

**Ambient Temperature Zone :** -30°C to +50°C

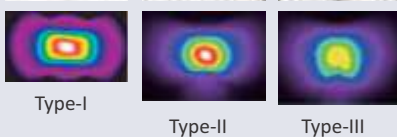
**Input Voltage Range :** 100V – 280V AC, 50-60 Hz



Application image for reference purpose only

### Technical Specifications

SERIES	ITEM CODE	SYSTEM WATTAGE	INPUT CURRENT	DELIVERED LUMENS	THD	PF	SURGE PROTECTION	CRI	IP	DIMENSION (LxWxH)mm
NEXA MIDI	OLSL-0060-757-T1-00	60	0.275	6000	<10%	0.95	4 KV	70	66	455x212x82
NEXA MIDI	OLSL-0072-757-T2-00	75	0.315	7500	<10%	0.95	4 KV	70	66	455x212x82
NEXA MIDI	OLSL-0082-757-T3-00	85	0.359	8500	<10%	0.95	4 KV	70	66	455x212x82

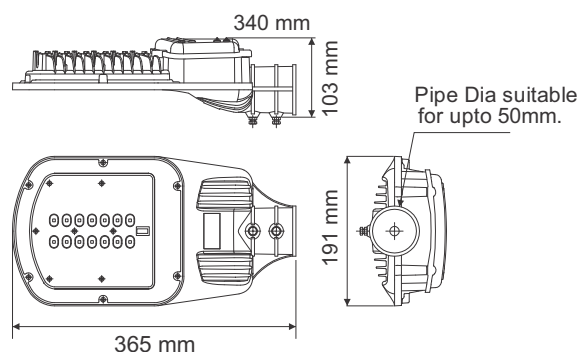


## RODEO-Mini

IP66 IK08



Energy Label A++



## LED STREET LIGHT

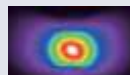
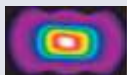
## SPECIFICATION

**Housing** : High pressure die cast aluminium**Top Cover** : High pressure die cast aluminium**LEDs** : High power LEDs with high efficacy (>150lm/W), 3000K /4000K/5700K having luminous flux maintenance of 70% (L70 B20) at 50,000 Hrs.**Pole connection** : Suited for poles with a diameter 50 mm**Lens** : High efficiency PMMA Lenses. TYPE-1, TYPE-2, TYPE-3**Diffuser** : Clear toughened glass 4mm thick, resistant to thermal shock**Coating**: Polyester resin powder coating, resistant to corrosion and saline environments**Driver** : Integral driver with safety diode to protect the LED module against voltage peaks up to 4KV. P.F. > 0.95**Ambient Temperature Zone** : -30 °C to +50°C**Input Voltage Range** : 100V – 280V AC, 50-60 Hz

Application image for reference purpose only

## Technical Specifications

SERIES	ITEM CODE	SYSTEM WATTAGE	INPUT CURRENT	DELIVERED LUMENS	THD	PF	SURGE PROTECTION	CRI	IP	DIMENSION (LxWxH)mm
RODEO MINI	OLSL-0035-757-T1-00	35	0.16	3590	<10%	0.95	4 KV	70	66	365x191x103
RODEO MINI	OLSL-0040-757-T2-00	40	0.185	4068	<10%	0.95	4 KV	70	66	365x191x103
RODEO MINI	OLSL-0045-757-T3-00	45	0.205	4547	<10%	0.95	4 KV	70	66	365x191x103
RODEO MINI	OLSL-0060-757-T4-00	60	0.275	6222	<10%	0.95	4 KV	70	66	365x191x103

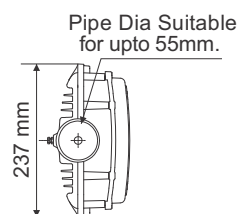
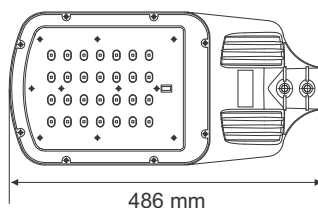
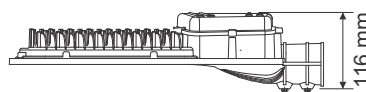


# RODEO-Midi

IP66 IK08



Energy Label A++



## LED STREET LIGHT

### SPECIFICATION

**Housing** : High pressure die cast aluminium

**Top Cover** : High pressure die cast aluminium

**LEDs** : High power LEDs with high efficacy (>150lm/W), 3000K/4000K/5700K having luminous flux maintenance of 70% (L70 B20) at 50,000 Hrs.

**Pole connection** : Suited for poles with a diameter 55mm.

**Lens** : High Efficiency PMMA Lenses. TYPE-1,TYPE-2,TYPE-3.

**Diffuser** : Clear toughened glass 4mm thick, resistant to thermal shock.

**Coating**: Polyester resin powder coating, resistant to corrosion and saline environments.

**Driver** : Integral driver with safety diode to protect the LED module against voltage peaks up to 4KV. P.F. > 0.95.

**Ambient Temperature Zone** : -30 °C to +50°C

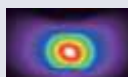
**Input Voltage Range** : 100V – 280V AC, 50-60 Hz



Application image for reference purpose only

### Technical Specifications

SERIES	ITEM CODE	SYSTEM WATTAGE	INPUT CURRENT	DELIVERED LUMENS	THD	PF	SURGE PROTECTION	CRI	IP	DIMENSION (LxWxH)mm
RODEO MIDI	OLSL-0070-757-T1-00	70	0.321	7179	<10%	0.95	4 KV	70	66	486x237x116
RODEO MIDI	OLSL-0090-757-T2-00	90	0.415	9094	<10%	0.95	4 KV	70	66	486x237x116



Type-I

Type-II

Type-III

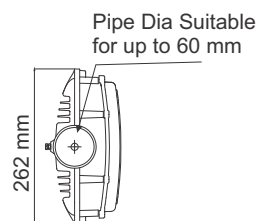
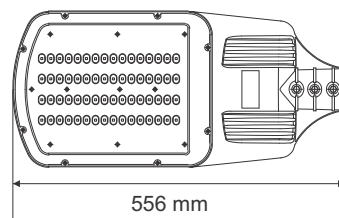
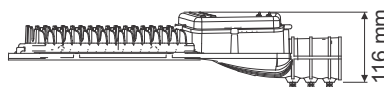


# RODEO-Maxi

IP66 IK08



Energy Label **A++**



## LED STREET LIGHT

### SPECIFICATION

**Housing** : High pressure die cast aluminium

**Top Cover** : High pressure die cast aluminium

**LEDs** : High power LEDs with high efficacy (>150lm/W), 3000K /4000K/5700K having luminous flux maintenance of 70% (L70 B20) at 50,000 Hrs.

**Pole connection** : Suited for poles with a diameter 60 mm.

**Lens** : High Efficiency PMMA Lenses TYPE-1,TYPE-2,TYPE-3

**Diffuser** : Clear toughened glass 4mm thick, resistant to thermal shock.

**Coating**: Polyester resin powder coating, resistant to corrosion and saline environments.

**Driver** : Integral driver with safety diode to protect the LED module against voltage peaks up to 4KV. P.F. > 0.95.

**Ambient Temperature Zone** : -30 °C to +50°C

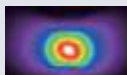
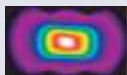
**Input Voltage Range** : 100V – 280V AC, 50-60 Hz



Application image for reference purpose only

### Technical Specifications

SERIES	ITEM CODE	SYSTEM WATTAGE	INPUT CURRENT	DELIVERED LUMENS	THD	PF	SURGE PROTECTION	CRI	IP	DIMENSION (LxWxH)mm
RODEO MAXI	OLSL-0100-757-T1-00	100	0.461	10075	<10%	0.95	4 KV	70	66	556x262x116
RODEO MAXI	OLSL-0110-757-T2-00	110	0.505	11009	<10%	0.95	4 KV	70	66	556x262x116
RODEO MAXI	OLSL-0120-757-T3-00	120	0.551	12444	<10%	0.95	4 KV	70	66	556x262x116
RODEO MAXI	OLSL-0150-757-T4-00	150	0.691	15316	<10%	0.95	4 KV	70	66	556x262x116



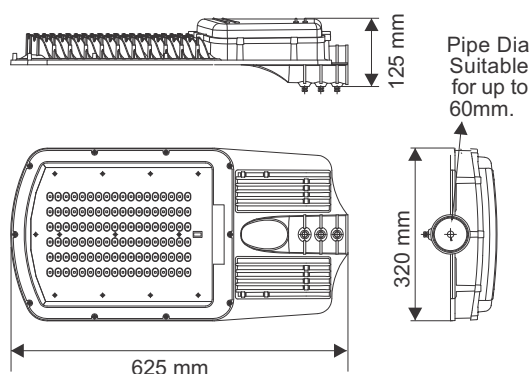


# RODEO-Mega

IP66 IK08



Energy Label A++



## LED STREET LIGHT

### SPECIFICATION

**Housing** : High pressure die cast aluminium

**Top Cover** : High pressure die cast aluminium

**LEDs** : High power LEDs with high efficacy (>150lm/W), 3000K/ 4000K/5700K having luminous flux maintenance of 70% (L70 B20) at 50,000 Hrs.

**Pole connection** : Suited for poles with a diameter 60 mm.

**Lens** : High Efficiency PMMA Lenses. TYPE-1,TYPE-2,TYPE-3

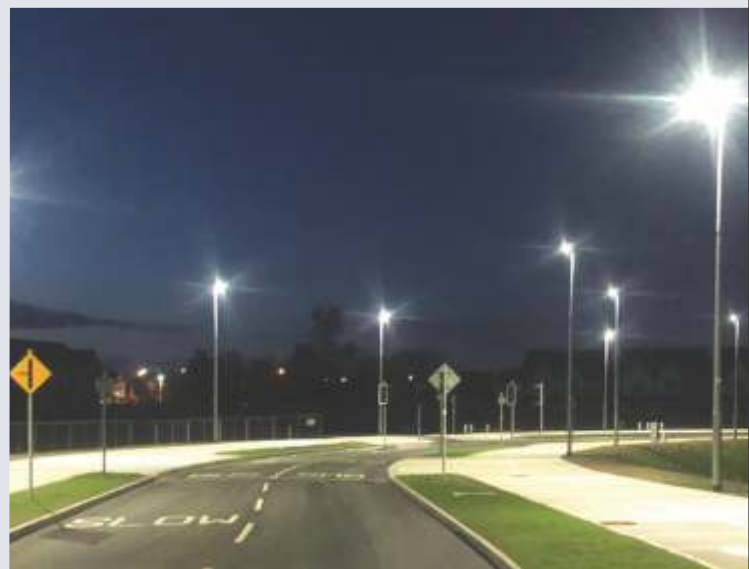
**Diffuser** : Clear toughened glass 4mm thick, resistant to thermal shock.

**Coating**: Polyester resin powder coating, resistant to corrosion and saline environments.

**Driver** : Integral driver with safety diode to protect the LED module against voltage peaks up to 4KV. P.F. > 0.95.

**Ambient Temperature Zone** : -30 °C to +50°C

**Input Voltage Range** : 100V – 280V AC, 50-60 Hz



Application image for reference purpose only

### Technical Specifications

SERIES	ITEM CODE	SYSTEM WATTAGE	INPUT CURRENT	DELIVERED LUMENS	THD	PF	SURGE PROTECTION	CRI	IP	DIMENSION (LxWxH)mm
RODEO MEGA	OLSL-0160-757-T1-00	160	0.735	16700	<10%	0.95	4 KV	70	66	625x320x125
RODEO MEGA	OLSL-0200-757-T2-00	200	0.92	21000	<10%	0.95	4 KV	70	66	625x320x125
RODEO MEGA	OLSL-0250-757-T3-00	250	1.145	26000	<10%	0.95	4 KV	70	66	625x320x125



Type-I

Type-II

Type-III



## THETA

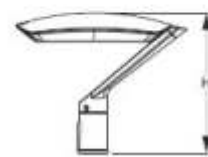
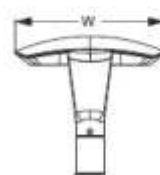
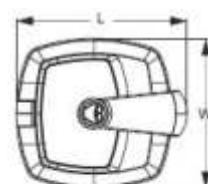
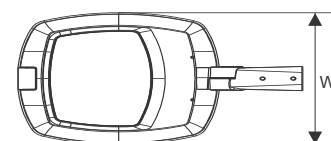
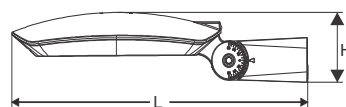
IP66 IK08

Energy Label A++

Theta -I

Theta -II

## LED STREET LIGHT



## SPECIFICATION

**Housing** : High pressure die cast aluminium**Top Cover** : High pressure die cast aluminium**LEDs** : High power LEDs with high efficacy (>150lm/W), 3000K /4000K/5700K having luminous flux maintenance of 70% (L70 B20) at 50,000 Hrs.**Pole connection** : Suited for poles with a diameter 60 - 76mm.**Lens** : High Efficiency PMMA Lenses. Street light Type-I/Type-II/ Type-III/Type-IV**Diffuser** : Clear toughened glass 4mm thick, resistant to thermal shock.**Coating**: Polyester resin powder coating, resistant to corrosion and saline environments.**Driver** : Integral driver with safety diode to protect the LED module against voltage peaks up to 4KV. P.F. > 0.95.**Ambient Temperature Zone** : -30 °C to +50°C**Input Voltage Range** : 100V – 280V AC, 50-60 Hz

Application image for reference purpose only

## Technical Specifications

SERIES	ITEM CODE	SYSTEM WATTAGE	INPUT CURRENT	DELIVERED LUMENS	THD	PF	SURGE PROTECTION	CRI	IP	DIMENSION (LxWxH)mm
THETA-I	OLSL-0050-740-T2-00	50	0.219	5750	<10%	0.95	4 KV	70	66	603x416x129
THETA-I	OLSL-0075-740-T2-00	75	0.318	8250	<10%	0.95	4 KV	70	66	603x416x129
THETA-I	OLSL-0100-740-T3-00	100	0.438	11500	<10%	0.95	4 KV	70	66	603x416x129
THETA-II	OLSL-0050-740-T4-00	50	0.219	5750	<10%	0.95	4 KV	70	66	474x416x390
THETA-II	OLSL-0075-740-T4-00	75	0.318	8250	<10%	0.95	4 KV	70	66	474x416x390
THETA-II	OLSL-0100-740-T4-00	100	0.438	11500	<10%	0.95	4 KV	70	66	474x416x390



# Aerostreet-SLEEK

IP66 IK08

STREET LIGHTING

Energy Label A++

## LED STREET LIGHT

### SPECIFICATION

**Housing** : High pressure die cast aluminium

**Top Cover** : High pressure die cast aluminium

**LEDs** : High power LEDs with high efficacy (>150lm/W), 3000K /4000K/5700K having luminous flux maintenance of 70% (L70 B20) at 50,000 Hrs.

**Pole connection** : Suited for poles with a diameter 60 - 76mm.

**Lens** : High Efficiency PMMA Lenses. Street light Type-I/Type-II/ Type-III/Type-IV

**Diffuser** : Clear toughened glass 4mm thick, resistant to thermal shock.

**Coating**: Polyester resin powder coating, resistant to corrosion and saline environments.

**Driver** : Integral driver with safety diode to protect the LED module against voltage peaks up to 4KV. P.F. > 0.95.

**Ambient Temperature Zone** : -30 °C to +50°C

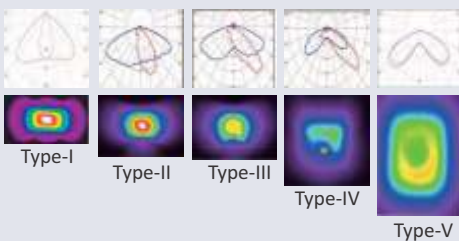
**Input Voltage Range** : 100V – 280V AC, 50-60 Hz



Application image for reference purpose only

### Technical Specifications

SERIES	ITEM CODE	SYSTEM WATTAGE	INPUT CURRENT	DELIVERED LUMENS	THD	PF	SURGE PROTECTION	CRI	IP	DIMENSION (LxWxH)mm
SLEEK	OLSL-0050-757-T2-00	50	0.219	5750	<10%	0.95	4 KV	70	66	641x241x114
SLEEK	OLSL-0075-740-T4-00	75	0.318	8250	<10%	0.95	4 KV	70	66	641x241x114
SLEEK	OLSL-0100-757-T2-00	100	0.438	11500	<10%	0.95	4 KV	70	66	641x241x114
SLEEK	OLSL-0150-757-T3-00	150	0.657	16500	<10%	0.95	4 KV	70	66	641x241x114







# URBAN LIGHTING



Pleasing, efficient and safe  
lighting for modern cities

## Urban Lighting



## KIA-I

IP66 IK08

Energy Label **A++**

## LED POST TOP LIGHT

## DESIGN FEATURES

- Die cast Aluminium alloy housing
- Polyester powder coating
- Robust, Sleek design with excellent heat dissipation
- Dark sky compliant design with full cut-off optics
- 4mm Thick clear toughened bottom sealed glass
- Silicon moulded gaskets for IP66 rating
- All Stainless steel - AISI 304 grade hardware

## THERMAL MANAGEMENT

- Generously designed housing with heat sink attached to housing frame for better heat dissipation

## LEDs

- High efficacy (>140Lm/W) outdoor illumination grade SMD LEDs, LM80 Certified.
- Low junction thermal resistance for long life and low lumen depreciation
- Luminous flux maintenance 70%, 50,000 Hrs (L70B20)
- High color rendering : CRI - 70/80/90
- Various CCT : 3000K/ 4000K/ 5700K

## ELECTRICAL SYSTEM

- Outdoor rated >90% efficiency constant current drivers with over voltage (440V AC)/Undervoltage, Short circuit & open circuit protection 4KV / 5KV / 6KV inbuilt surge protection.
- Low current harmonics : THD < 10%
- Low flicker : <3%
- Ambient temperature range : -30°C To +50°C

## OPTICAL SYSTEM

- Variety of photometric beam options for - Street Lighting, Parking / Public square area lighting
- Structured on High Performance Optical Grade Lenses in PMMA / PC
- Photometric design data for all optics available

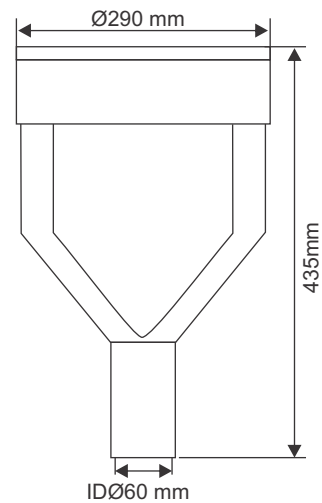
## COMPLIANCES - LUMINAIRE

- As per IS 10322 (Part5 / Sec.3) 2012
- IP66, IK08 as per IEC-EN 62262
- **On Request:** Surface coating resistant to Salt spray tests pursuant to Standard UNI EN ISO 9227.



# KIA-I

IP66 IK08

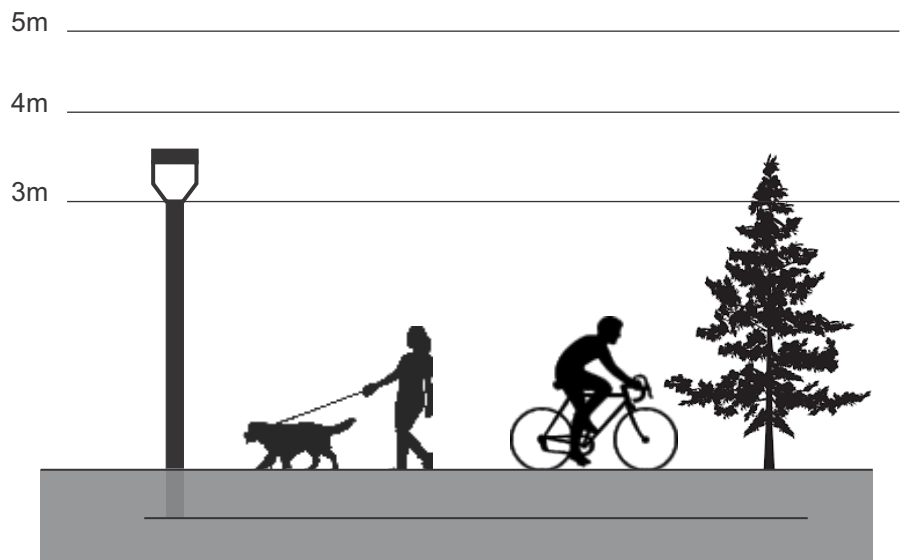


## Technical Parameters

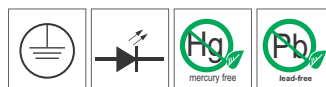
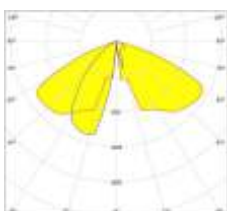
Input AC Voltage	:	140 to 277V AC
Frequency	:	50 / 60 Hz
Luminous Efficacy	:	>90 Lumens/Watt
CCT (K)	:	3000K / 4000K / 5700K
Optics	:	High efficiency PMMA lenses Strada optics Type-2 / Type-3

## Technical Specifications

SERIES	ITEM CODE	SYSTEM WATTAGE	INPUT CURRENT	DELIVERED LUMENS	LIGHT BEAM	THD	PF	SURGE PROTECTION	CCT	CRI
KIA-I	OLPT-0028-740-T2-00	28	0.132	2700	T2 Strada	<10%	0.95	4 KV	4000K	70
KIA-I	OLPT-0028-730-T3-00	28	0.132	2700	T3 Strada	<10%	0.95	4 KV	3000K	70



25° - 33° Medium Beam



## KIA-II

IP66 IK08

Energy Label A++



## LED POST TOP LIGHT

## DESIGN FEATURES

- Die cast Aluminium alloy housing
- Polyester powder coating
- Robust, Sleek design with excellent heat dissipation
- Dark sky compliant design with full cut-off optics
- 4mm Thick clear toughened bottom sealed glass
- Silicon moulded gaskets for IP66 rating
- All Stainless steel - AISI 304 grade hardware

## THERMAL MANAGEMENT

- Generously designed housing with heat sink attached to housing frame for better heat dissipation

## LEDs

- High efficacy (>140Lm/W) Outdoor Illumination Grade SMD LEDs, LM80 Certified.
- Low junction thermal resistance for Long Life and Low Lumen depreciation
- Luminous flux maintenance 70%, 50,000 Hrs (L70B20)
- High colour rendering : CRI - 70/80/90
- Various CCT : 3000K/ 4000K/ 5700K

## ELECTRICAL SYSTEM

- Outdoor rated >90% Efficiency constant current drivers with over voltage (440V AC)/Undervoltage, Short circuit & open circuit protection 4KV / 5KV / 6KV inbuilt surge protection.
- Low Current Harmonics : THD < 10%
- Low Flicker : <3%
- Ambient temperature range : -30°C To +50°C

## OPTICAL SYSTEM

- Variety of photometric beam options for - Street Lighting, Parking / Public square area lighting
- Structured on high performance optical grade lenses in PMMA / PC
- Photometric design data for all optics available

## COMPLIANCES - LUMINAIRE

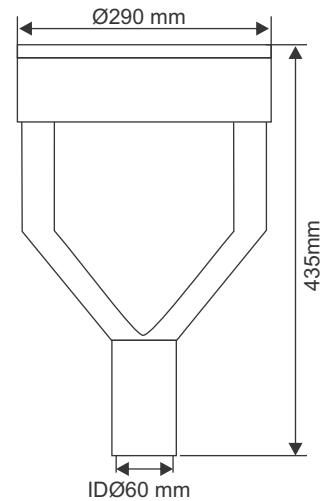
- As per IS 10322 (Part5 / Sec.3) 2012
- IP66, IK08 as per IEC-EN 62262
- **On Request:** Surface coating resistant to Salt spray tests pursuant to Standard UNI EN ISO 9227.





# KIA-II

IP66 IK08

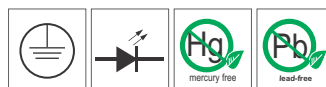
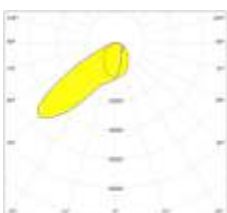
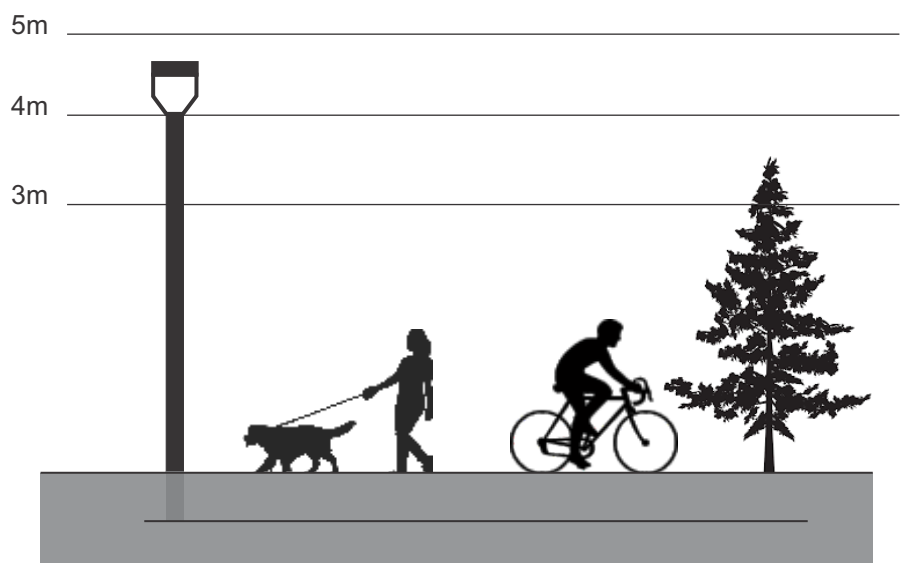


## Technical Parameters

Input AC Voltage	:	140 to 277V AC
Frequency	:	50 / 60 Hz
Luminous Efficacy	:	>90 Lumens/Watt
CCT (K)	:	3000K / 4000K / 5700K
Optics	:	High efficiency PMMA lenses Strada optics type-2 / Type-3/ Type-4/Forward Asym / Type 5 Extra Wide

## Technical Specifications

SERIES	ITEM CODE	SYSTEM WATTAGE	INPUT CURRENT	DELIVERED LUMENS	LIGHT BEAM	THD	PF	SURGE PROTECTION	CCT	CRI
KIA-II	OLPT-0036-740-T2-00	36	0.158	3250	T2 Strada	<10%	0.95	4 KV	4000K	70
KIA-II	OLPT-0036-740-T4-00	36	0.158	3250	T4 Strada	<10%	0.95	4 KV	4000K	70
KIA-II	OLPT-0036-740-VSM-00	36	0.158	3250	T5 Wide	<10%	0.95	4 KV	4000K	70
KIA-II	OLPT-0036-740-FN-00	36	0.158	3250	Asym FN	<10%	0.95	4 KV	4000K	70



## KIA-III

IP66 IK08

Energy Label A++

## LED POST TOP LIGHT

## DESIGN FEATURES

- Die cast Aluminium alloy housing
- Polyester powder coating
- Robust, Sleek design with excellent heat dissipation
- Dark sky compliant design with full cut-off optics
- 4mm Thick clear toughened bottom sealed glass
- Silicon moulded gaskets for IP66 rating
- All Stainless steel - AISI 304 grade hardware

## THERMAL MANAGEMENT

- Generously designed housing with heat sink attached to housing frame for better heat dissipation

## LEDs

- High efficacy (>140Lm/W) outdoor Illumination grade SMD LEDs, LM80 Certified.
- Low junction thermal resistance for long life and low lumen depreciation
- Luminous flux maintenance 70%, 50,000 Hrs (L70B20)
- High color rendering : CRI - 70/80/90
- Various CCT : 3000K/ 4000K/ 5700K

## ELECTRICAL SYSTEM

- Outdoor rated >90% efficiency constant current drivers with over voltage (440V AC)/Undervoltage, Short circuit & open circuit protection 4KV / 5KV / 6KV inbuilt surge protection.
- Low current harmonics : THD < 10%
- Low flicker : <3%
- Ambient temperature range : -30°C To +50°C

## OPTICAL SYSTEM

- Variety of photometric beam options for - Street Lighting, Parking / Public square area lighting
- Structured on high performance optical grade lenses in PMMA / PC
- Photometric design data for all optics available

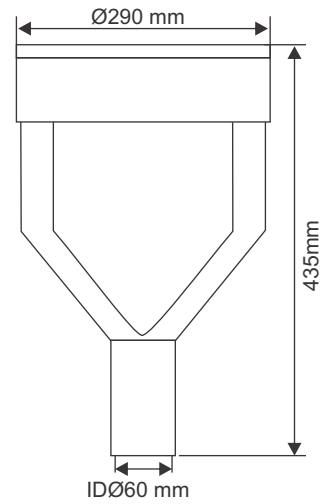
## COMPLIANCES - LUMINAIRE

- As per IS 10322 (Part5 / Sec.3) 2012
- IP66, IK08 as per IEC-EN 62262
- **On Request:** Surface coating resistant to Salt spray tests pursuant to Standard UNI EN ISO 9227.



# KIA-III

IP66 IK08

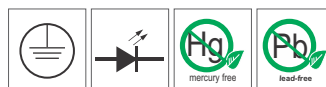
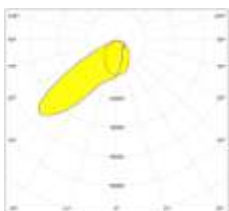
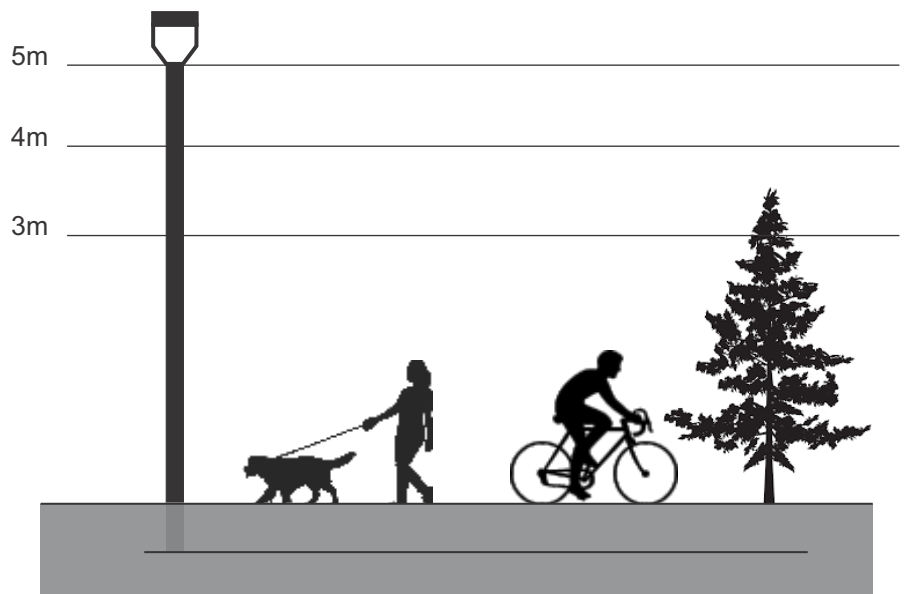


## Technical Parameters

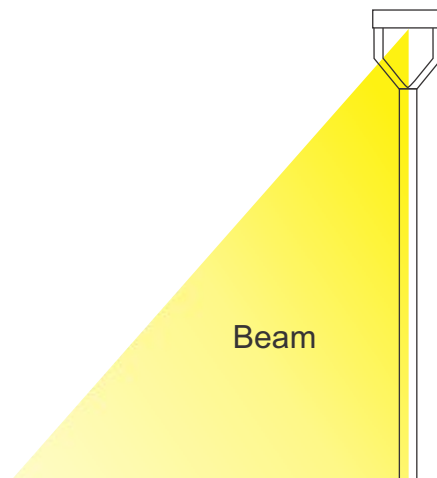
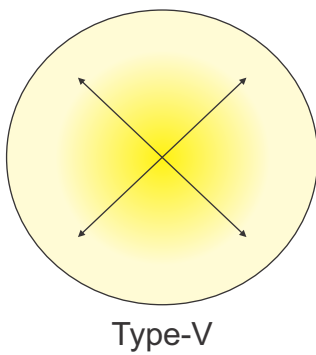
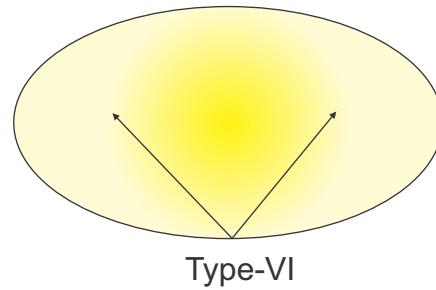
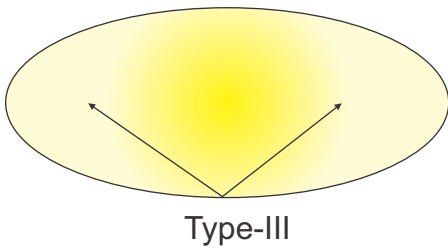
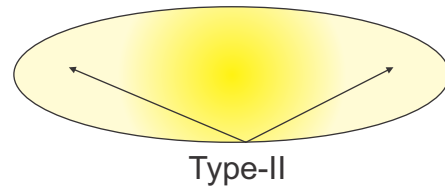
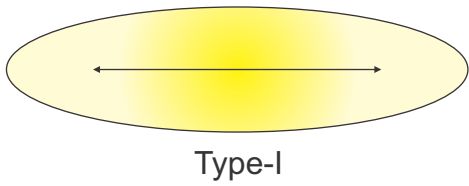
Input AC Voltage	:	140 to 277V AC
Frequency	:	50 / 60 Hz
Luminous Efficacy	:	>90 Lumens/Watt
CCT (K)	:	3000K / 4000K / 5700K
Optics	:	High Efficiency PMMA lenses Strada optics Type-2 / Type-3/ Type-4/Forward Asym / Type 5 Extra Wide

## Technical Specifications

SERIES	ITEM CODE	SYSTEM WATTAGE	INPUT CURRENT	DELIVERED LUMENS	LIGHT BEAM	THD	PF	SURGE PROTECTION	CCT	CRI
KIA-III	OLPT-0052-740-T2-00	52	0.228	4700	T2 Strada	<10%	0.95	4 KV	4000K	70
KIA-III	OLPT-0052-740-T4-00	52	0.228	4700	T4 Strada	<10%	0.95	4 KV	4000K	70
KIA-III	OLPT-0052-740-VSM-00	52	0.228	4700	T5 Wide	<10%	0.95	4 KV	4000K	70
KIA-III	OLPT-0052-740-FN-00	52	0.228	4700	Asym FN	<10%	0.95	4 KV	4000K	70



# KIA Beam options



## AVAILABLE OPTICS



Rotosymmetrical



Cycle Route / Pedestrian



Street

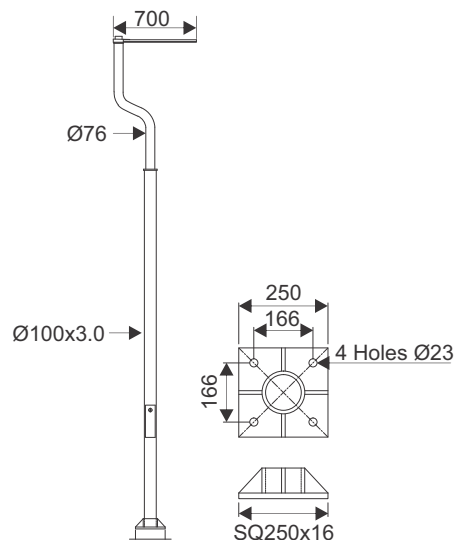


# HALO

IP66 IK08

Energy Label A++

## LED POST TOP LIGHT



### SPECIFICATION

**Housing :** Die-cast aluminium.

**LEDs :** Mid / High power LEDs with high efficacy (>150lm/W), 3000/4000/ 5700K, with luminous flux maintenance of 70% (L70 B20) at 50,000 Hrs.

**Pole Mounting:** Suited for poles with a top diameter 60mm

**Optics:** Opal diffused / Clear PC diffuser with wide angle lenses

**Diffuser :** Poly carbonate opal diffused / Clear

**Coating:** Polyester resin powder coating, resistant to corrosion and saline environments.

**Driver :** Integral with safety diode to protect the LED module against voltage peaks up to 4KV. PF > 0.9

**Ambient Temperature Zone :** -30 °C to +50°C

**Input Voltage Range :** 100V – 280V AC, 50-60 Hz

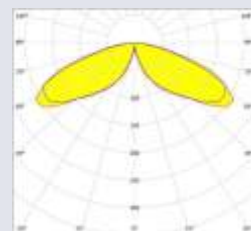
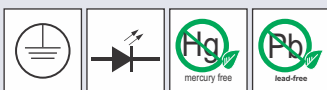
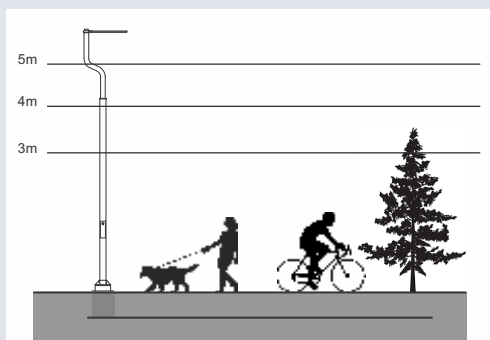
**Standards :** As per IS 10322 (Part5 / Sec.3) 2012



Application image for reference purpose only

### Technical Specifications

SERIES	ITEM CODE	SYSTEM WATTAGE	INPUT CURRENT	DELIVERED LUMENS	LIGHT BEAM	THD	PF	SURGE PROTECTION	CCT	CRI
HALO	OLPT-0060-740-DIFF-00	60	0.263	3250	Diffused	<10%	0.95	4 KV	4000K	70
HALO	OLPT-0060-740-T5-00	60	0.263	5400	T5 STD	<10%	0.95	4 KV	4000K	70



## BARRIO

IP66 IK08

Energy Label **A++**

## LED POST TOP LIGHT

## DESIGN FEATURES

- Die Cast Aluminium alloy housing
- Top cover reinforced thermoplastic.
- Diffuser made of Clear / Opal PMMA
- Direct downward lighting from LEDs mounted on heat sink at the top
- Silicon Moulded gaskets for IP66 rating
- All Stainless steel - AISI 304 grade hardware

## THERMAL MANAGEMENT

- LED MCPCB provided on large circular aluminium heat sink centrally attached to housing bottom pole mounted spigot for better heat dissipation

## LEDs

- High efficacy (>150Lm/W) outdoor Illumination grade SMD LEDs, LM80 Certified.
- Low junction thermal resistance for long life and low lumen depreciation
- Luminous flux maintenance 70%, 50,000 Hrs (L70B20)
- High colour rendering : CRI - 70/80/90
- Various CCT : 3000K/ 4000K/ 5700K

## ELECTRICAL SYSTEM

- Outdoor rated >90% efficiency constant current drivers with over voltage (440V AC)/Undervoltage, Short circuit & open circuit protection 4KV / 5KV / 6KV inbuilt surge protection.
- Low current harmonics : THD < 10%
- Low flicker : <3%
- Ambient temperature range : -30°C To +50°C

## OPTICAL SYSTEM

- Variety of photometric beam options for Public parks, Campuses, Car parking areas
- Structured on high performance optical grade lenses in PMMA / PC or opal diffuser
- Photometric design data for all optics available

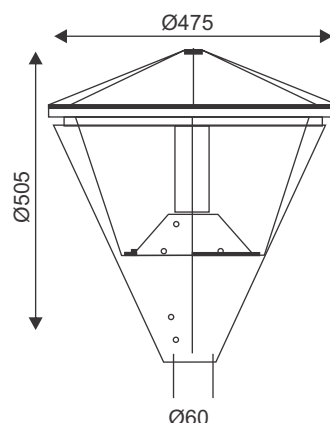
## COMPLIANCES - LUMINAIRE

- As per IS 10322 (Part5 / Sec.3) 2012
- IP66, IK08 as per IEC-EN 62262
- **On Request:** Surface coating resistant to Salt Spray tests pursuant to Standard UNI EN ISO 9227.



# BARRIO

IP66 IK08



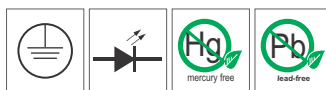
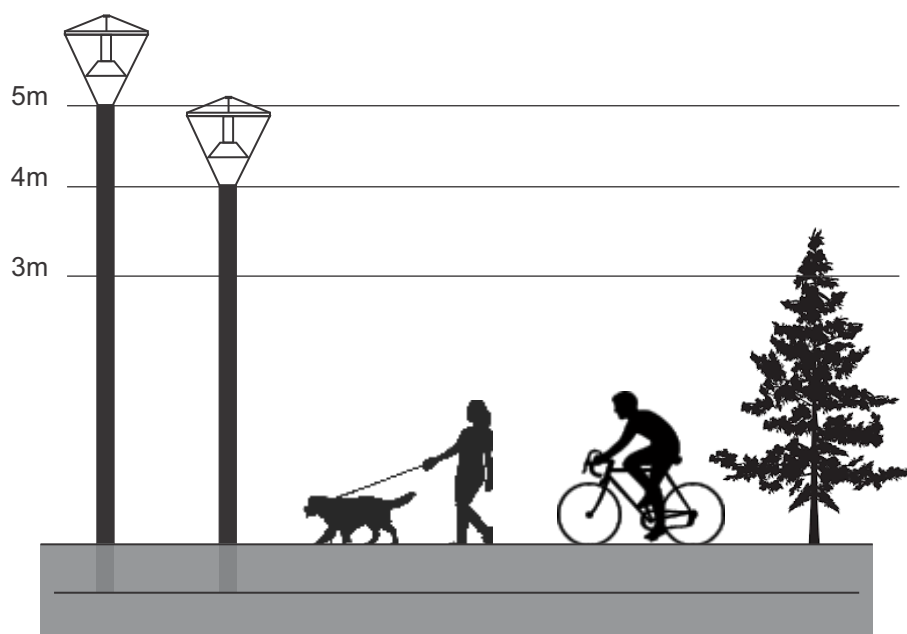
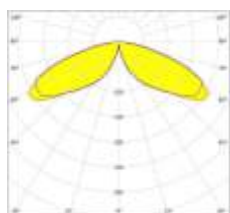
URBAN LIGHTING

## Technical Parameters

Input AC Voltage	: 140 to 277V AC
Frequency	: 50 / 60 Hz
Luminous Efficacy	: >90 Lumens / Watt
CCT (K)	: 3000K / 4000K / 5700K
Optics	: High Efficiency PMMA lenses / Opal diffused

## Technical Specifications

SERIES	ITEM CODE	SYSTEM WATTAGE	INPUT CURRENT	DELIVERED LUMENS	LIGHT BEAM	THD	PF	SURGE PROTECTION	CCT	CRI
BARRIO-CL	OLPT-0036-740-VSM-00	36	0.158	3250	T5 Wide	<10%	0.95	4 KV	4000K	70
BARRIO-CL	OLPT-0060-740-DNW-00	60	0.263	5400	T5 STD	<10%	0.95	4 KV	4000K	70
BARRIO-OPL	OLPT-0036-740-DIFF-00	36	0.158	1800	Diffused	<10%	0.95	4 KV	4000K	70
BARRIO-OPL	OLPT-0060-740-DIFF-00	60	0.263	3000	Diffused	<10%	0.95	4 KV	4000K	70



## QUBIK POLES



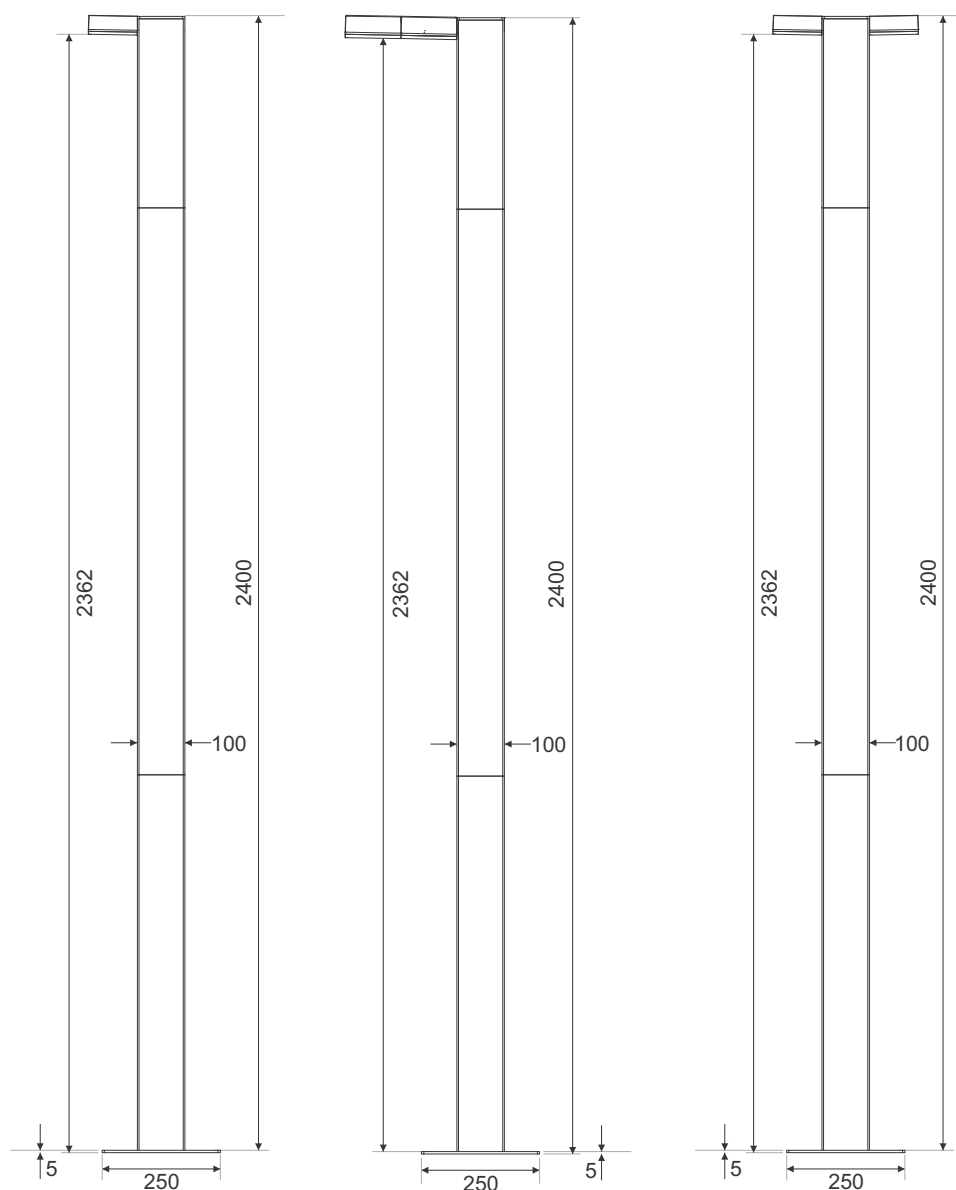
## LED ARCHITECTURAL POLE LIGHT

## DESIGN FEATURES

- Square cross section SS 316L 3mm + Solid Teak wood Pole
- Suited for One / Two side Qubik Street Light
- Qubik Drivers Housed inside the pole top, accessible through top cover
- External SPD and MCB placed inside cable termination cum junction compartment in the bottom portion of the pole, accessible through inspection window
- Base plate fixing on pedestal foundation using 4 Nos. M12x35 mm SS Bolts and Nuts
- All Stainless Steel-AISI 304 Grade Hardware







## Technical Specifications

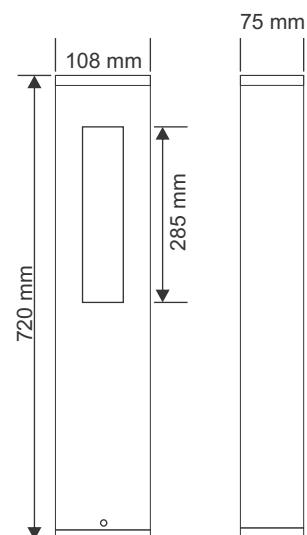
SERIES	LUMINAIRE CONFIGURATION	ITEM CODE	SYSTEM WATTAGE	POLE HEIGHT (mm)	DELIVERED LUMENS	LIGHT BEAM
QUBIKPOLE-SINGLE SIDE	Single Qubik Street Optics	OLPT-0025-740-T4B-00	25	2400	2500	Street T4
QUBIKPOLE-SINGLE SIDE	Single Qubik Forward Asymm.	OLPT-0025-740-FN-00	25	2400	2500	Asymm FN
QUBIKPOLE-DOUBLE SIDE	Twin Qubik Street Optics	OLPT-0050-740-T4B-00	50	2400	5000	Street T4
QUBIKPOLE-DOUBLE SIDE	Twin Qubik Forward Asymm.	OLPT-0050-740-FN-00	50	2400	5000	Asymm FN
QUBIKPOLE-DOUBLE SIDE	Single Qubik Street Optics x2	OLPT-0050-740-T4B-00	50	2400	5000	Street T4
QUBIKPOLE-DOUBLE SIDE	Twin Qubik Street Optics x2	OLPT-0100-740-T4B-00	100	2400	10000	Street T4



## FLO-I

IP66 IK08

Energy Label A++



## LED BOLLARD LIGHT

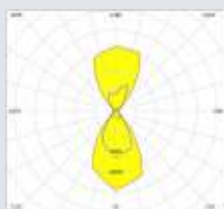
## SPECIFICATION

**Housing :** Die-cast & extruded aluminium**Light Emission :** Two way**LEDs :** Power LEDs with high efficacy (>140lm/W), 3000/4000/5700K, with luminous flux maintenance of 70% (L70 B20) at 50,000 Hrs.**Mounting:** Surface pedestal**Diffuser:** Sealed toughened glass**Coating:** Polyester resin powder coating, resistant to corrosion and saline environments.**Driver :** Integral driver with safety diode to protect the LED module against voltage peaks up to 4KV. PF > 0.9**Ambient Temperature Zone :** -30 °C to +50°C**Input Voltage Range :** 100V – 280V AC, 50-60 Hz**Standards :** As per IS 10322 (Part5 / Sec.3) 2012

Application image for reference purpose only

## Technical Specifications

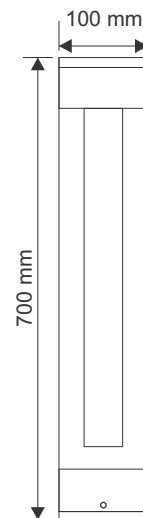
SERIES	ITEM CODE	SYSTEM WATTAGE	INPUT CURRENT	DELIVERED LUMENS	LIGHT BEAM	THD	PF	SURGE PROTECTION	CCT	CRI
FLO-I	OLBL-0010-740-00-00	10	0.046	500	Two way	<10%	0.90	4 KV	4000K	70
FLO-I	OLBL-0010-730-00-00	10	0.046	500	Two way	<10%	0.90	4 KV	3000K	70



# FLO-II

IP66 IK08

Energy Label **A++**



## LED BOLLARD LIGHT

### SPECIFICATION

**Housing :** Die-cast & extruded aluminium

**Light Emission :** Four way

**LEDs :** Power LEDs with high efficacy (>140lm/W), 3000/4000/5700K, with luminous flux maintenance of 70% (L70 B20) at 50,000 Hrs.

**Mounting:** Surface pedestal

**Diffuser:** Sealed toughened glass

**Coating:** Polyester resin powder coating, resistant to corrosion and saline environments.

**Driver :** Integral Driver with safety diode to protect the LED module against voltage peaks up to 4KV. PF > 0.9

**Ambient Temperature Zone :** -30 °C to +50°C

**Input Voltage Range :** 100V – 280V AC, 50-60 Hz

**Standards :** As per IS 10322 (Part5 / Sec.3) 2012



Application image for reference purpose only

### Technical Specifications

SERIES	ITEM CODE	SYSTEM WATTAGE	INPUT CURRENT	DELIVERED LUMENS	LIGHT BEAM	THD	PF	SURGE PROTECTION	CCT	CRI
FLO-II	OLBL-0010-740-00-00	10	0.046	500	Four way	<10%	0.90	4 KV	4000K	70
FLO-II	OLBL-0010-730-00-00	10	0.046	500	Four way	<10%	0.90	4 KV	3000K	70

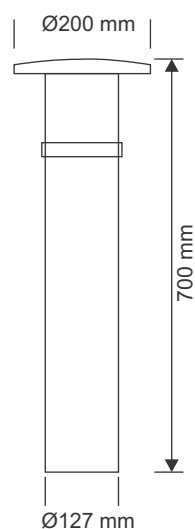


## TOPLED

IP66 IK08



Energy Label A++



## LED BOLLARD LIGHT

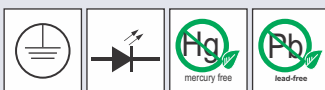
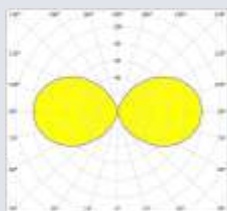
## SPECIFICATION

**Housing :** Extruded aluminium.**Top Cover :** Die cast aluminium.**LEDs :** Power LEDs with high efficacy (>140lm/W), 3000/4000/5700K, with luminous flux maintenance of 70% (L70 B20) at 50,000 Hrs.**Mounting:** Surface pedestal**Optics:** Opal diffused 360° Symmetric,**Diffuser:** Polycarbonate extruded**Coating:** Polyester resin powder coating, resistant to corrosion and saline environments.**Driver :** Integral driver with safety diode to protect the LED module against voltage peaks up to 4KV. P.F. > 0.9**Ambient Temperature Zone :** -30 °C to +50°C**Input Voltage Range :** 100V – 280V AC, 50-60 Hz**Standards :** As per IS 10322 (Part5 / Sec.3) 2012

Application image for reference purpose only

## Technical Specifications

SERIES	ITEM CODE	SYSTEM WATTAGE	INPUT CURRENT	DELIVERED LUMENS	LIGHT BEAM	THD	PF	SURGE PROTECTION	CCT	CRI
TOP LED	OLBL-0010-730-DIFF-00	10	0.046	500	Diffused	<10%	0.90	4 KV	3000K	70
TOP LED	OLBL-0020-730-DIFF-00	20	0.092	1000	Diffused	<10%	0.90	4 KV	3000K	70









## Aeroflood-QUBIK-Spike

IP66 IK08



Energy Label A++

## LED ARCHITECTURAL &amp; LANDSCAPE SPOT LIGHT

## DESIGN FEATURES

- High pressure die cast aluminium alloy housing
- Polyester powder coating
- Robust, Sleek design with excellent heat dissipation
- 360° Cradle movement for omnidirectional precise focusing
- 3mm thick extra clear toughened glass
- Silicon moulded gaskets for IP66 rating
- All Stainless steel - AISI 304 grade hardware

## THERMAL MANAGEMENT

- Generously designed radiator fins in vertical direction to ensure proper Air convection
- Separate integral / Non integral driver compartment for thermal isolation & Not to affect LED compartment during maintenance, provided with Brass PG7 cable gland

## LEDs

- High efficacy (>140Lm/W) outdoor illumination grade SMD LEDs, LM80 Certified.
- Low junction thermal resistance for long life and low lumen depreciation
- Luminous flux maintenance 70%, 50,000 Hrs (L70B20)
- High colour rendering : CRI - 70/80/90
- Various CCT : 3000K/ 4000K/ 5700K

## ELECTRICAL SYSTEM

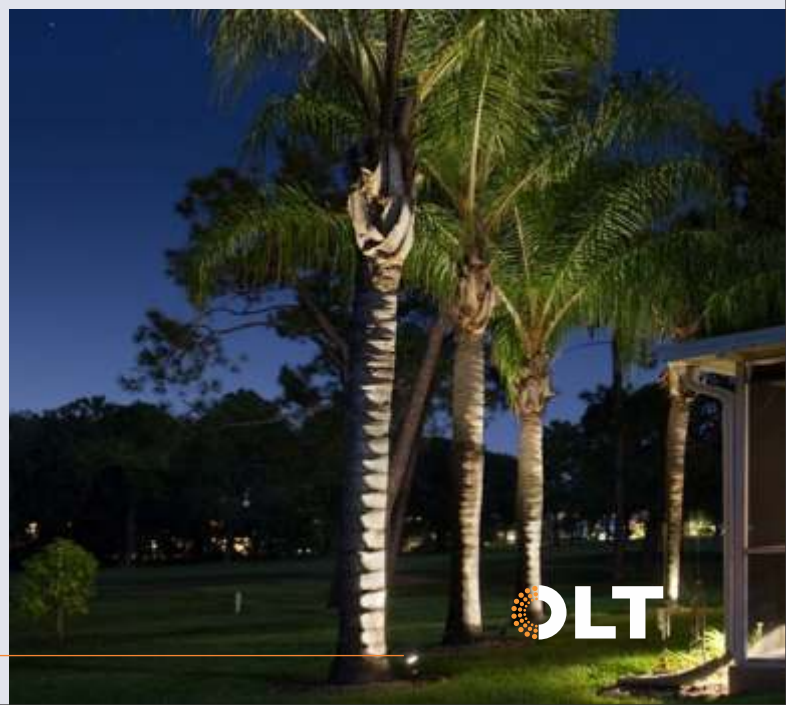
- Outdoor rated >90% Efficiency constant current drivers with over voltage (440V AC)/Undervoltage, Short circuit & open circuit protection 4KV / 5KV / 6KV inbuilt surge protection.
- Low current harmonics : THD < 10%
- Low flicker : <3%
- Ambient temperature range : -30°C To +50°C

## OPTICAL SYSTEM

- Variety of photometric beam options for - Facade Lighting, Area Lighting, Tunnel Lighting.
- Structured on high performance optical grade lenses in PMMA / PC
- Photometric design data for all optics available

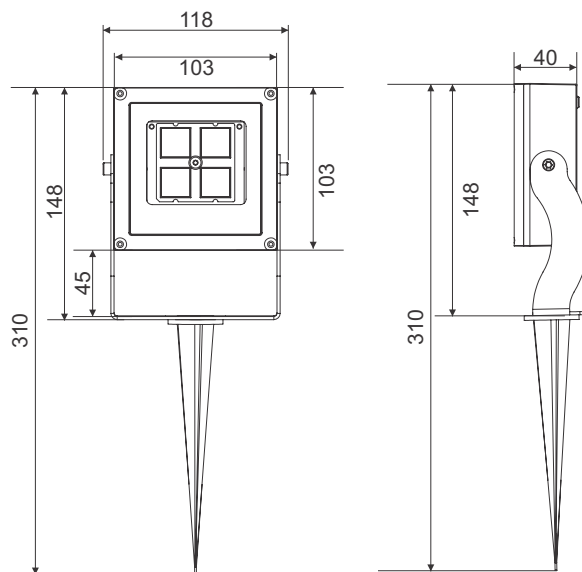
## COMPLIANCES - LUMINAIRE

- As Per IS 10322 (Part5/ Sec.5) 2012 & 2015
- IP66, IK08 as per IEC-EN 62262
- **On Request:** Surface coating resistant to Salt spray tests pursuant to Standard UNI EN ISO 9227.



# Aeroflood-QUBIK-Spike

IP66 IK08



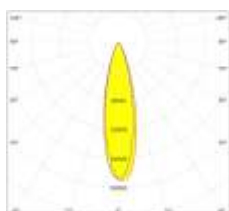
## Technical Parameters

Input AC Voltage	: 140 to 277V AC
Frequency	: 50 / 60 Hz
Luminous Efficacy	: >100 Lumens/Watt
CCT (K)	: 3000K / 4000K / 5700K / Single Colour R/G/B/A
Optics	: Symmetric : 10° / 25° / 60° / 90° Asymmetric : 15°x 45° Elliptical / FN - Forward Asymmetric 45°

## Technical Specifications

SERIES	ITEM CODE	SYSTEM WATTAGE	INPUT CURRENT	DELIVERED LUMENS	LIGHT BEAM	THD	PF	SURGE PROTECTION	CCT	CRI
QUBIK-SPIKE	OLFL-0010-740-10-02	10	0.044	1000	Symm10°	<10%	0.95	4 KV	4000K	70
QUBIK-SPIKE	OLFL-0010-740-25-02	10	0.044	1000	Symm 25°	<10%	0.95	4 KV	4000K	70
QUBIK-SPIKE	OLFL-0010-740-60-02	10	0.044	1000	Symm 60°	<10%	0.95	4 KV	4000K	70
QUBIK-SPIKE	OLFL-0010-740-FN-02	10	0.044	1000	AsymmFN	<10%	0.95	4 KV	4000K	70
QUBIK-SPIKE	OLFL-0018-740-33-02	18	0.079	1800	Symm 33°	<10%	0.95	4 KV	4000K	70
QUBIK-SPIKE	OLFL-0018-740-60-02	18	0.079	1800	Symm 60°	<10%	0.95	4 KV	4000K	70
QUBIK-SPIKE	OLFL-0018-740-FN-02	18	0.079	1800	AsymmFN	<10%	0.95	4 KV	4000K	70
QUBIK-SPIKE	OLFL-0018-740-90-02	18	0.079	1800	Symm 90°	<10%	0.95	4 KV	4000K	70

25° - 33° Medium Beam



# Grazia-PYGMY-Spike

IP66 IK08



Energy Label **A++**

## LED ARCHITECTURAL & LANDSCAPE SPOT LIGHT

### DESIGN FEATURES

- Extruded Aluminium housing with pressure die cast aluminium end caps
- Polyester powder coating Matt black / Natural oxidized aluminium Anodised. Other RAL shades available on request.
- Robust, Sleek design with excellent heat dissipation
- Adjustable SS 316 brackets for mounting and orientation.
- 4mm Thick extra clear Screen printed toughened glass
- Silicon moulded gaskets for IP66 rating
- All Stainless steel - AISI 304 grade hardware.
- Brass PG7 cable gland

### THERMAL MANAGEMENT

- Radiator fins along the extrusion length for improved heat dissipation
- Integral / Non integral driver.

### LEDs

- Cree / Seoul 3535 Discrete SMD Colour LEDs, LM80 Certified.
- Low junction thermal resistance for long life and low lumen depreciation
- Luminous flux maintenance 70%, 50,000 Hrs (L70B20)

### ELECTRICAL SYSTEM

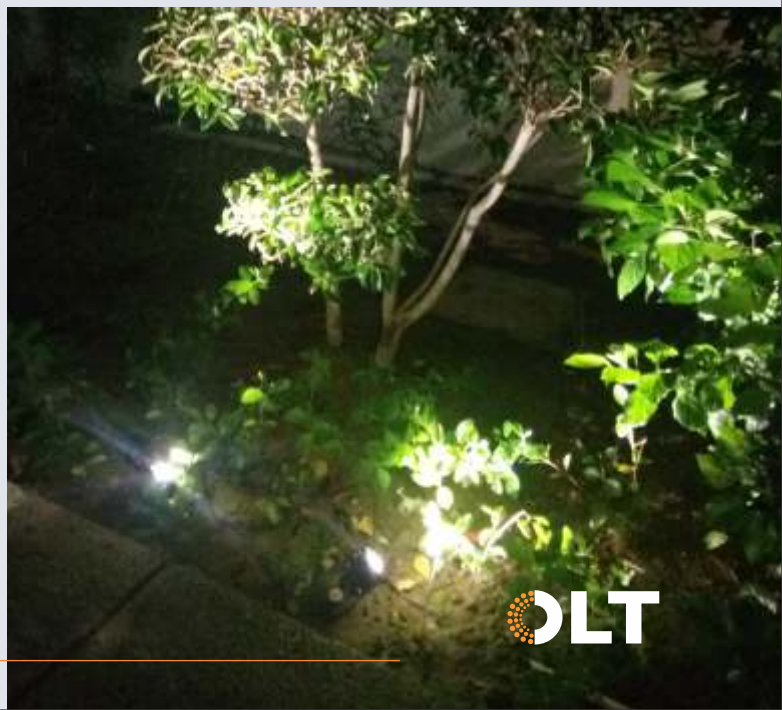
- Outdoor rated >90% efficiency Constant current / Constant voltage drivers integral / In separate IP66 driver box
- Low current harmonics : THD < 10%
- Low flicker : <3%
- Ambient temperature range : -30°C To +50°C

### OPTICAL SYSTEM

- Variety of photometric beam options for - Facade Lighting, Accent and Stage Lighting
- Structured on high performance optical grade lenses in PMMA / PC
- Photometric design data for all optics available

### COMPLIANCES - LUMINAIRE

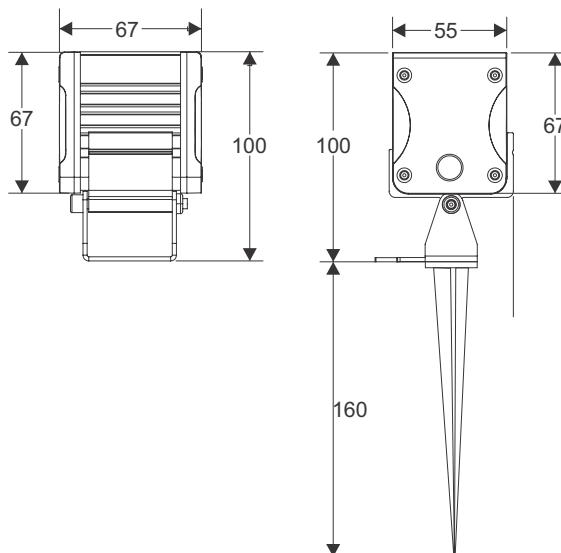
- As Per IS 10322 (Part 5 / Sec.5) 2012 & 2015
- IP66, IK08 as per IEC-EN 62262
- **On Request:** Surface coating resistant to Salt spray tests pursuant to Standard UNI EN ISO 9227.





# Grazia-PYGMY-Spike

IP66 IK08



URBAN LIGHTING

## Technical Parameters

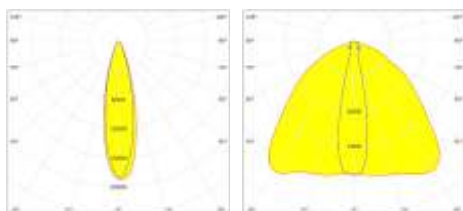
Input AC Voltage	: 140 to 277V AC
Frequency	: 50 / 60 Hz
Luminous Efficacy	: 80 to 100 Lumens/Watt
CCT (K)	: 3000K / 4000K / 5700K / RGBW / Single Colour R/G/B/A
Optics	: Symmetric : 3° / 10° / 15° / 5° x 20° / 25° / 10° x 60° / 15° x 45°

## Technical Specifications

SERIES	ITEM CODE	SYSTEM WATTAGE	INPUT CURRENT	DELIVERED LUMENS	THD	PF	SURGE PROTECTION	CCT	CRI	IP	DIMENSION (LxWxH)mm
PYGMY-SPIKE	OLLF-0003-730-03-00	3	0.014	240	<20%	0.50	2 KV	3000K	70	66	67x67x100
PYGMY-SPIKE	OLLF-0006-730-25-00	6	0.028	240	<20%	0.50	2 KV	3000K	70	66	67x67x100
PYGMY-SPIKE	OLLF-0006-730-10x60	6	0.028	240	<20%	0.50	2 KV	3000K	70	66	67x67x100
PYGMY-SPIKE	OLLF-0006-730-20x90	6	0.028	240	<20%	0.90	4 KV	3000K	70	66	67x67x100
PYGMY-SPIKE	OLLF-0010-RGBW - 15	10	0.044	240	<20%	0.90	4 KV	NA	NA	66	67x67x100

25°

20°x90°

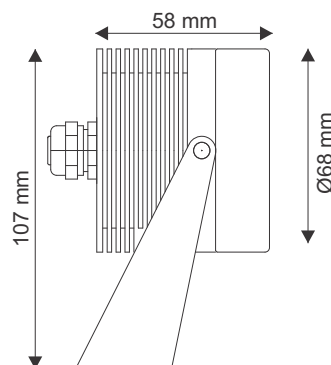


# OMNISCUBA-Mini Surface

IP66 IK10



Energy Label A++



## LED UNDER WATER LIGHT

### SPECIFICATION

**Housing :** Stainless steel AISI 316L Marine grade

**Diffuser:** Toughened glass extra clear 8 mm thick

**LEDs :** Power LEDs with high efficacy (>120lm/W), 3000/4000/5700K,/R/G/B with luminous flux maintenance of 70% (L70 B20) at 50,000 Hrs.

**Mounting:** Adjustable Stainless steel bracket

**Driver :** Non integral

**Optics:** 12° / 25° Symetric

**Ambient Temperature Zone :** -30 °C to +50°C

**Input Voltage Range :** 100V – 280V AC, 50-60 Hz

**Cable :** 3 Mtrs. Elastomer 3C x 1Sq.mm cable with IP68 connector

**Note:**

- To be used only for continues underwater applications up to 1.5 Mtrs. depth
- Driver to be ordered separately

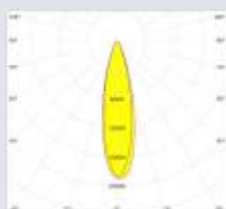


Application image for reference purpose only

### Technical Specifications

SERIES	ITEM CODE	SYSTEM WATTAGE	INPUT CURRENT	DELIVERED LUMENS	LIGHT BEAM	THD	PF	SURGE PROTECTION	CCT	CRI
OMNISCUBA-S	OLUW-006-740-S	6	0.027	430	Symm 25°	<20%	0.90	4 KV	3000K	70
OMNISCUBA-S	OLUW-006-BLUE-S	6	0.027	130	Symm 25°	<20%	0.90	4 KV	BLUE	NA
OMNISCUBA-S	OLUW-007-RGBW-S	7	0.032	175	Symm 25°	<20%	0.90	4 KV	RGBW	NA

25° Spot

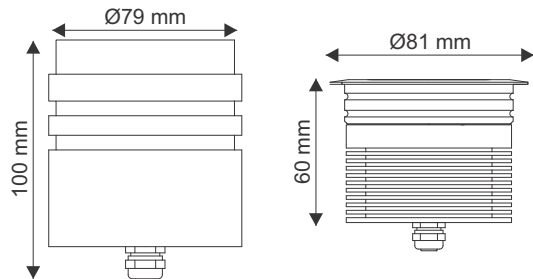


# OMNISCUBA-Mini Recess

IP66 IK10



Energy Label A++



URBAN LIGHTING

## LED UNDER WATER LIGHT

### SPECIFICATION

**Housing :** Stainless steel AISI 316L Marine grade

**Diffuser:** Toughened glass extra clear 8 mm thick

**LEDs :** Power LEDs with high efficacy (>120lm/W), 3000/4000/5700K,/R/G/B with luminous flux maintenance of 70% (L70 B20) at 50,000 Hrs.

**Mounting:** Wall / Floor recessed in Nylon sleeve

**Driver :** Non integral

**Optics:** 12° / 25° Symetric

**Ambient Temperature Zone :** -30 °C to +40°C

**Input Voltage Range :** 100V – 280V AC, 50-60 Hz

**Cable :** 3 Mtrs. Elastomer 3C x 1Sq.mm cable with IP68 connector

**Note:**

- To be used only for continues underwater applications up to 1.5 Mtrs. depth
- Driver to be ordered separately

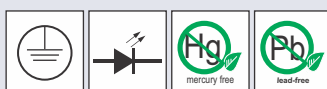
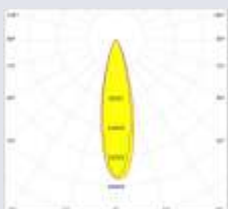


Application image for reference purpose only

### Technical Specifications

SERIES	ITEM CODE	SYSTEM WATTAGE	INPUT CURRENT	DELIVERED LUMENS	LIGHT BEAM	THD	PF	SURGE PROTECTION	CCT	CRI
OMNISCUBA-R	OLUW-006-740-R	6	0.027	430	Symm 25°	<20%	0.90	4 KV	3000K	70
OMNISCUBA-R	OLUW-006-BLUE-R	6	0.027	130	Symm 25°	<20%	0.90	4 KV	BLUE	NA
OMNISCUBA-R	OLUW-007-RGBW-R	7	0.032	175	Symm 25°	<20%	0.90	4 KV	RGBW	NA

25° Spot



# INGRESS PROTECTION (IP XY)

Solids (X)	Water (Y)
<b>0</b> No Protection 	<b>0</b> No Protection 
<b>1</b> Protection from a large part of the body such as a hand and from solid objects greater than 50mm in diameter. 	<b>1</b> Protected from condensation and water droplets 
<b>2</b> Protection against fingers or other object not greater than 80mm in length and 12mm in diameter 	<b>2</b> Vertically dripping water shall have no harmful effect when the enclosure is tilted at an angle up to 15° from its normal position 
<b>3</b> Protected from tools and wires greater than 2.5 millimeters. 	<b>3</b> Protected from water spray when at an angle up to 60° from vertical 
<b>4</b> Protected from tools and wires greater than 1mm in width. 	<b>4</b> Protected from water spray from any direction. 
<b>5</b> Protected from limited dust ingress. 	<b>5</b> Protected from low pressure water jets from any direction 
<b>6</b> Protected from total dust ingress. 	<b>6</b> Protected from high pressure water jets from any direction 
	<b>7</b> Protected against short periods of immersion in water up to 1m depth 
	<b>8</b> Protected against long durable periods of immersion in water under pressure 



# IMPACT PROTECTION (IK XX)

**IK Ratings** are an international numeric classification to indicate the degrees of protection provided by enclosures for electrical equipment against external mechanical impacts. It provides a means of specifying the capacity of an enclosure to protect its contents from external impacts in accordance with IEC 62262:2002 and IEC 60068-2-75:1997.

**IK00** - No Protection

**IK01** - Protected against 0.14 joules of impact (the equivalent to the impact of a 0.25kg mass dropped from 56mm above the impacted surface)

**IK02** - Protected against 0.2 joules of impact (the equivalent to the impact of a 0.25kg mass dropped from 80mm above the impacted surface)

**IK03** - Protected against 0.35 joules of impact (the equivalent to the impact of a 0.2kg mass dropped from 140mm above the impacted surface)

**IK04** - Protected against 0.5 joules of impact (the equivalent to the impact of a 0.25kg mass dropped from 200mm above the impacted surface)

**IK05** - Protected against 0.7 joules of impact (the equivalent to the impact of a 0.25kg mass dropped from 280mm above the impacted surface)

**IK06** - Protected against 1 joules of impact (the equivalent to the impact of a 0.25kg mass dropped from 400mm above the impacted surface)

**IK07** - Protected against 2 joules of impact (the equivalent to the impact of a 0.5kg mass dropped from 400mm above the impacted surface)

**IK08** - Protected against 5 joules of impact (the equivalent to the impact of a 1.7kg mass dropped from 300mm above the impacted surface)

**IK09** - Protected against 10 joules of impact (the equivalent to the impact of a 5kg mass dropped from 200mm above the impacted surface)

**IK10** - Protected against 20 joules of impact (the equivalent to the impact of a 5kg mass dropped from 400mm above the impacted surface)







**Omnitech Lighting Pvt.Ltd.**

**Works & Head Office :** 524-C, Udyog Kendra Extn.-2,  
Ecotech-III, Greater Noida, Gautam Buddha Nagar - 201 308,U.P (India)

**Registered Office :** 8, Rosedale, Aliganj Road,  
Kashipur - 2400 713, Uttarakhand (India)

**E-Mail :** info@oltindia.com, **Website :** www.oltindia.com

